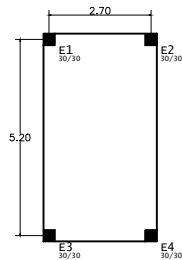
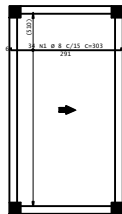


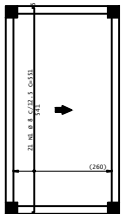
PLANTA DE FORMA  
esc. 1/50



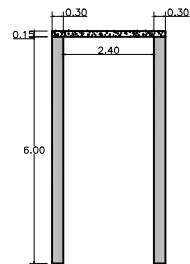
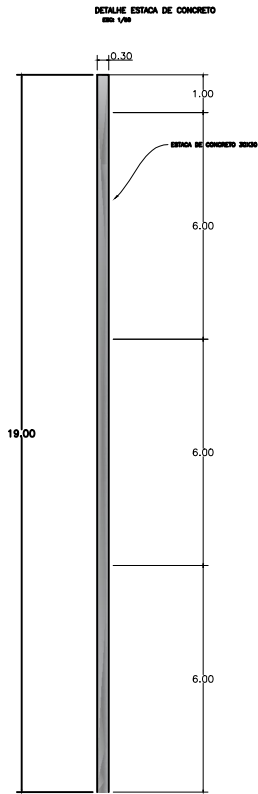
PLANTA DE LOCAÇÃO  
esc. 1/50



ARMADURA POSITIVA PRINCIPAL DA LAJE  
esc. 1/50

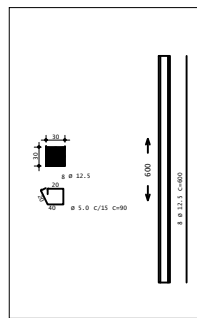


ARMADURA POSITIVA SECUNDÁRIA DA LAJE  
esc. 1/50



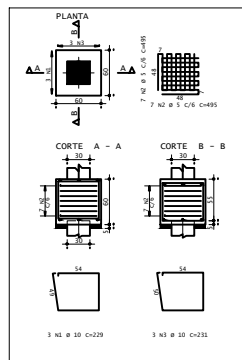
VISTA FRONTAL - ESTACA  
esc. 1/50

E1/E2/E3/E4  
(ESCALA 1:30)

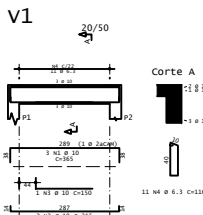
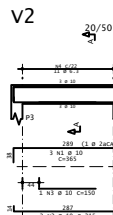
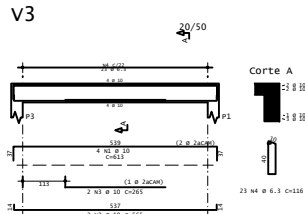
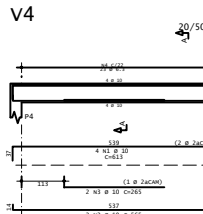


ARMADURA ESTACAS DE CONCRETO  
esc. 1/50

B1/B2/B3/B4  
(ESCALA 1:25)



ARMADURA BLOCOS DE CORAMENTO  
esc. 1/50



ACO	POS	BIT (mm)	QUANT	CONSUMO		
				UNID	TOTAL (gr)	
B1	S0A	1	10	1	229	887
	60A	2	5	14	491	6930
	S0A	1	10	1	231	693
B2	S0A	1	10	1	229	887
	60A	2	5	14	491	6930
	S0A	1	10	1	231	693
B3	S0A	1	10	1	229	887
	60A	2	5	14	491	6930
	S0A	1	10	1	231	693
B4	S0A	1	10	1	229	887
	60A	2	5	14	491	6930
	S0A	1	10	5	231	693

RESUMO AÇO CA 50-BU			
AÇO	BIT (mm)	COMPR (m)	PESO (kg)
B0A	5	277	64
S0A	10	55	34
Peso Total	B0A =		64 kg
Peso Total	S0A =		34 kg

AÇO	POS	BIT (mm)	QUANT	COMPRIMENTO	
				UNIT (cm)	TOTAL (cm)
V1					
	50A	2	20	3	165
	50A	2	10	2	315
					1095
					630

	SOA	3	10	1	150	150
	SOA	4	6.3	11	216	1276
V2						
	SOA	1	10	3	363	1093
	SOA	2	10	2	315	630
	SOA	3	10	1	150	150
	SOA	4	6.3	11	216	1276
V3						
	SOA	1	10	4	613	2452

	SOA	2	10	2	565	1130
	SOA	3	10	2	265	530
	SOA	4	6.3	23	116	2668
V4	SOA	2	10	4	613	2452
	SOA	2	10	2	565	1130
	SOA	3	10	2	265	530
	SOA	4	6.3	23	116	2668

RESUMO AÇO CA 50-60			
AÇO	BIT (mm)	COMPR (m)	PESO (kg)
50A	8-1	79	19
50A	10	120	74
Peso total		50A =	93 kg

AÇO	POS	BIT (mm)	QUANT	COMPRIMENTO	
				UNIT (cm)	TOTAL (cm)
Laje - Armadura positiva principal					
	50x	1	8	34	303
					10302
Laje - Armadura positiva secundaria					
	50x	1	8	21	351
					11571

RESUMO AÇO CA 50-60			
AÇO	BIT (mm)	COMPR (m)	PESO (kg)
SUA	5	219	86
Peso total		SUA =	86 kg

RESUMO DE FORMA E CONCRETO		
ESTRUTURA	FORMA (m²)	CONCRETO (m³)
Vigas	15,33	1,46

Laje	13,22	1,98
TOTAL	28,55	3,44

RESUMO ESTACAS DE CONCRETO		
	QUANT.	COMP. (m)
PASSARELA	4	76

ACO	BIT	CORPO	PESO
ACO	BIT	CORPO	PESO
B1	ACO	BIT	229 887
B2	ACO	BIT	491 6930
B3	ACO	BIT	229 887
B4	ACO	BIT	491 6930

ACO	BIT	CORPO	PESO
ACO	BIT	CORPO	PESO
B1	ACO	BIT	229 887
B2	ACO	BIT	491 6930
B3	ACO	BIT	229 887
B4	ACO	BIT	491 6930

ACO	BIT	CORPO	PESO
ACO	BIT	CORPO	PESO
B1	ACO	BIT	229 887
B2	ACO	BIT	491 6930
B3	ACO	BIT	229 887
B4	ACO	BIT	491 6930

ACO	BIT	CORPO	PESO
ACO	BIT	CORPO	PESO
B1	ACO	BIT	229 887
B2	ACO	BIT	491 6930
B3	ACO	BIT	229 887
B4	ACO	BIT	491 6930

ACO	BIT	CORPO	PESO
ACO	BIT	CORPO	PESO
B1	ACO	BIT	229 887
B2	ACO	BIT	491 6930
B3	ACO	BIT	229 887
B4	ACO	BIT	491 6930

ACO	BIT	CORPO	PESO
ACO	BIT	CORPO	PESO
B1	ACO	BIT	229 887
B2	ACO	BIT	491 6930
B3	ACO	BIT	229 887
B4	ACO	BIT	491 6930

ACO	BIT	CORPO	PESO
ACO	BIT	CORPO	PESO
B1	ACO	BIT	229 887
B2	ACO	BIT	491 6930
B3	ACO	BIT	229 887
B4	ACO	BIT	491 6930

ACO	BIT	CORPO	PESO
ACO	BIT	CORPO	PESO
B1	ACO	BIT	229 887
B2	ACO	BIT	491 6930
B3	ACO	BIT	229 887
B4	ACO	BIT	491 6930

ACO	BIT	CORPO	PESO
ACO	BIT	CORPO	PESO
B1	ACO	BIT	229 887
B2	ACO	BIT	491 6930
B3	ACO	BIT	229 887
B4	ACO	BIT	491 6930

TOS, PROJETOS E CONSTRUÇÃO LTDA	
PORTOS E HIDROVIAS - CPH	

FILHO - CREA 5571-D/PA		DES. N.º
NETTO - CREA 1515122280		009

le acesso em	0000
s e blocos de coroamento	REV. N.º 00

DETACHED		CONCRETE	
ANAJ-PLAT-009-800		fck=40MPa	